

DEVELOPMENT STATISTICS

BEDROOM TYPES:

- 1 BEDROOM UNITS
- 2 BEDROOM UNITS
- 3 BEDROOM UNITS

YIELD			
TOTAL UNITS PER FLOOR			
GROUND FLOOR		LEVEL 1-4	
1 BED:	4	1 BED:	3
2 BED:	11	2 BED:	12
3 BED:	9	3 BED:	9
TOTAL YIELD			
1 BED:	16		
2 BED:	59		
3 BED:	45		
<hr/>			
TOTAL UNITS: 120			

SITE COVER		
TOTAL AREA PER FLOOR		
GROUND FLOOR	VEHICLE AREAS	OPEN SPACE AND LANDSCAPING
2472.2	260.6m²	2491.1m²
TOTAL AREA		
5223.9m²		

UNIT AREAS	
TOTAL INTERNAL	TOTAL EXTERNAL
1983.6m²	488.6m²
TOTAL AREA	
2472.2m²	

TAYLOR CRESENT



WATERLOO STREET

QUEEN STREET

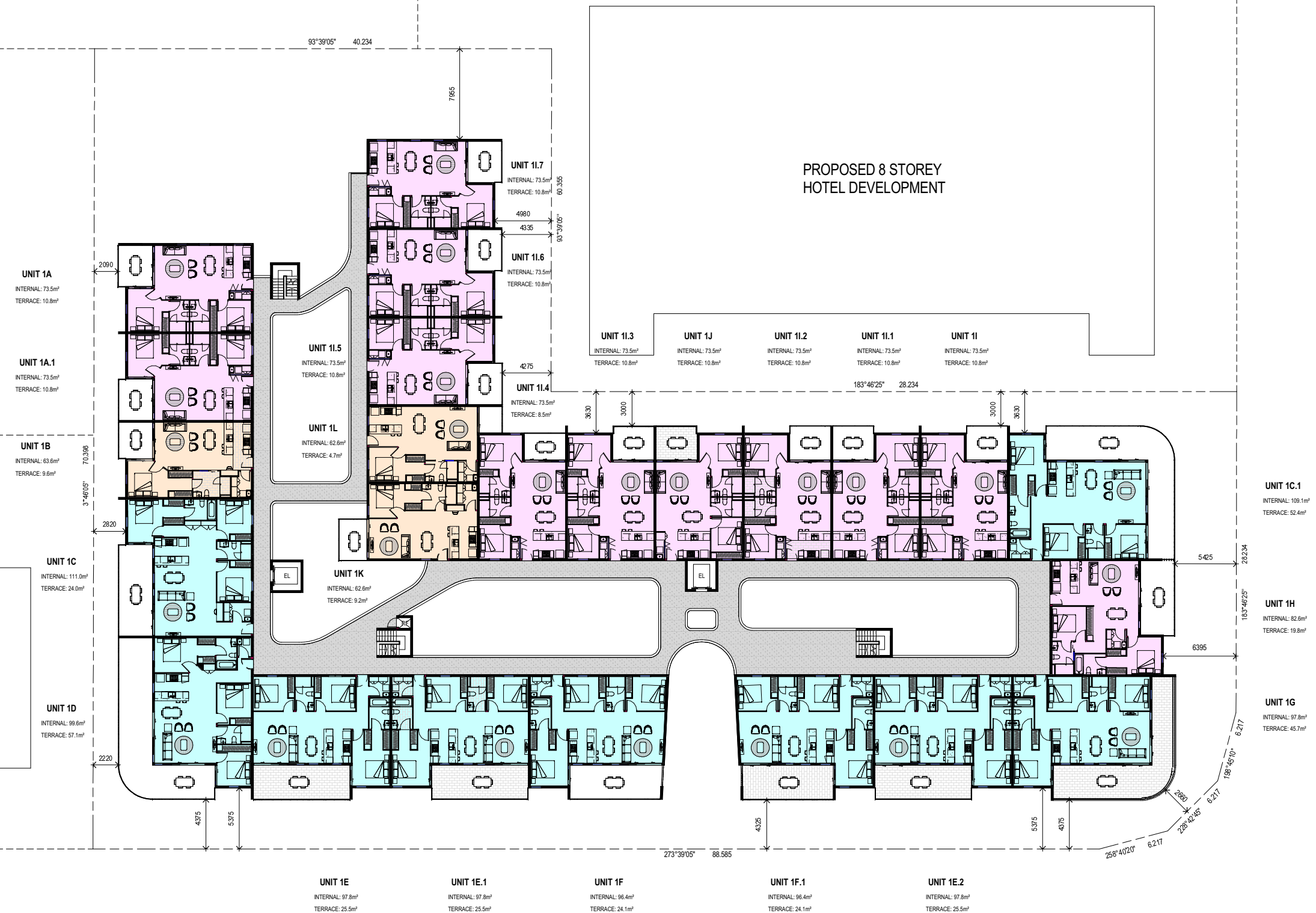
- BEDROOM TYPES:
- 1 BEDROOM UNITS
 - 2 BEDROOM UNITS
 - 3 BEDROOM UNITS

REVISIONS			
No.	Date	Description	By
1	17.09.14	PRELIMINARY	RS
2	10.06.15	CHANGES TO FLOOR LAYOUT - ARCHITECTS SUGGESTION	RS
3	21.12.15	DEVELOPMENT APPROVAL	PK
4	03.01.15	FOR CLIENT REVIEW	PK

PROJECT TITLE	
CNR. QUEEN ST & WATERLOO ST., CLEVELAND	
LOT 1 (LOTS 1,2&3 ON RP 82814)	140-146 QUEEN ST.
LOTS 22 & 23 ON RP 119834	24-26 TAYLOR CRES.
LOT 2 ON RP 884263	72 WATERLOO ST.
DRAWING TITLE	
GROUND FLOOR PLAN	

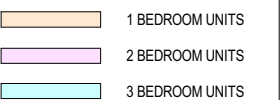
SCALE: @ A1	
DATE: 06/12/15	DRAWN BY: PK
DWG No:	REV
TP_0100 4	

TAYLOR CRESENT



WATERLOO STREET

BEDROOM TYPES:



REVISIONS			
No	Date	Description	By
1	17.09.14	PRELIMINARY	RS
2	10.06.15	CHANGES TO FLOOR LAYOUT - ARCHITECTS SUGGESTION	RS
3	21.12.15	DEVELOPMENT APPROVAL	PK
4	03.01.15	FOR CLIENT REVIEW	PK



PROJECT TITLE	
CNR. QUEEN ST & WATERLOO ST., CLEVELAND	
LOT 1 (LOTS 1,2&3 ON RP 82814)	140-146 QUEEN ST.
LOTS 22 & 23 ON RP 119834	24-26 TAYLOR CRES.
LOT 2 ON RP 884263	72 WATERLOO ST.
DRAWING TITLE	
LEVEL 1-4 TYPICAL FLOOR PLAN	

SCALE: @ A1

PROJECT No:
H-027

DATE:
06/12/15

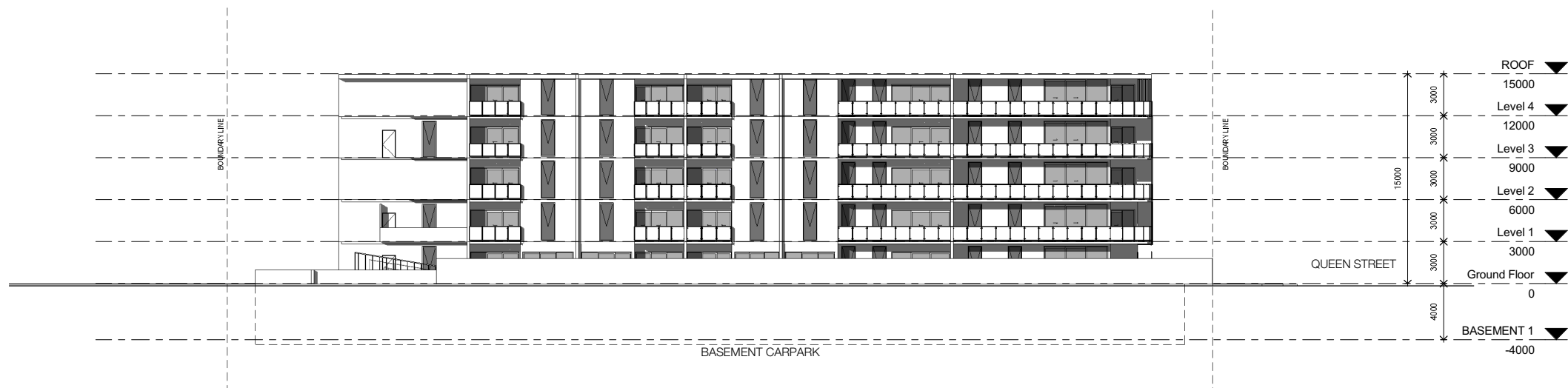
DRAWN BY:
PK

DWG No:	
---------	--

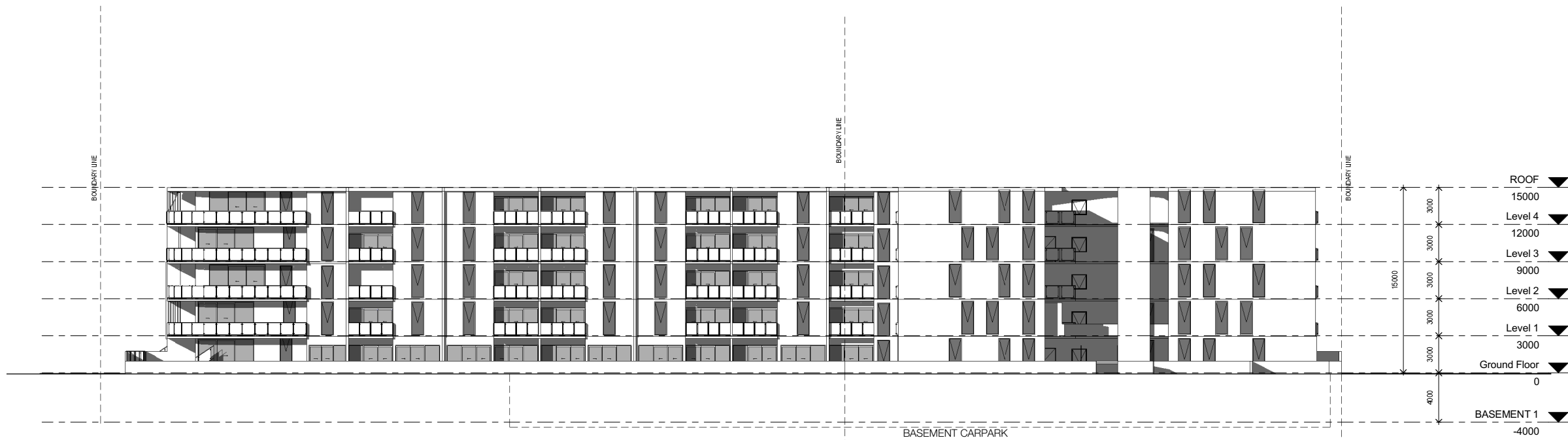
REV

TP 0101 | 4

PK HABITAT
PHILLIP KANG T: 0452 529 292



2 West
1 : 200

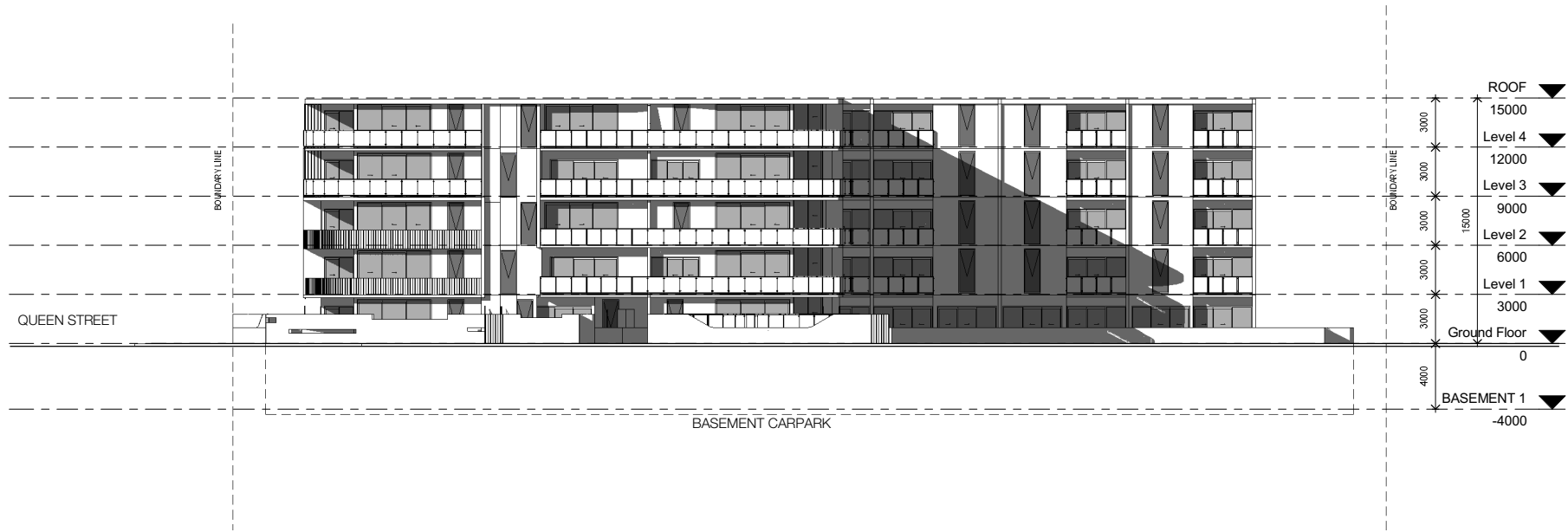


1 North
1 : 200

REVISIONS			
No.	Date	Description	By
1	17.09.14	PRELIMINARY	RS
2	10.06.15	CHANGES TO FLOOR LAYOUT - ARCHITECTS SUGGESTION	RS
3	21.12.15	DEVELOPMENT APPROVAL	PK
4	03.01.15	FOR CLIENT REVIEW	PK

PROJECT TITLE	
CNR. QUEEN ST & WATERLOO ST., CLEVELAND	
LOT 1 (LOTS 1,2&3 ON RP 82814)	140-146 QUEEN ST.
LOTS 22 & 23 ON RP 119834	24-26 TAYLOR CRES.
LOT 2 ON RP 884263	72 WATERLOO ST.
DRAWING TITLE	
NORTH & WEST ELEVATION	

SCALE: @ A1	
PROJECT No: IH-027	
DATE: 06/12/15	DRAWN BY: PK
DWG No:	REV
TP_0300 4	



2 East
1 : 200

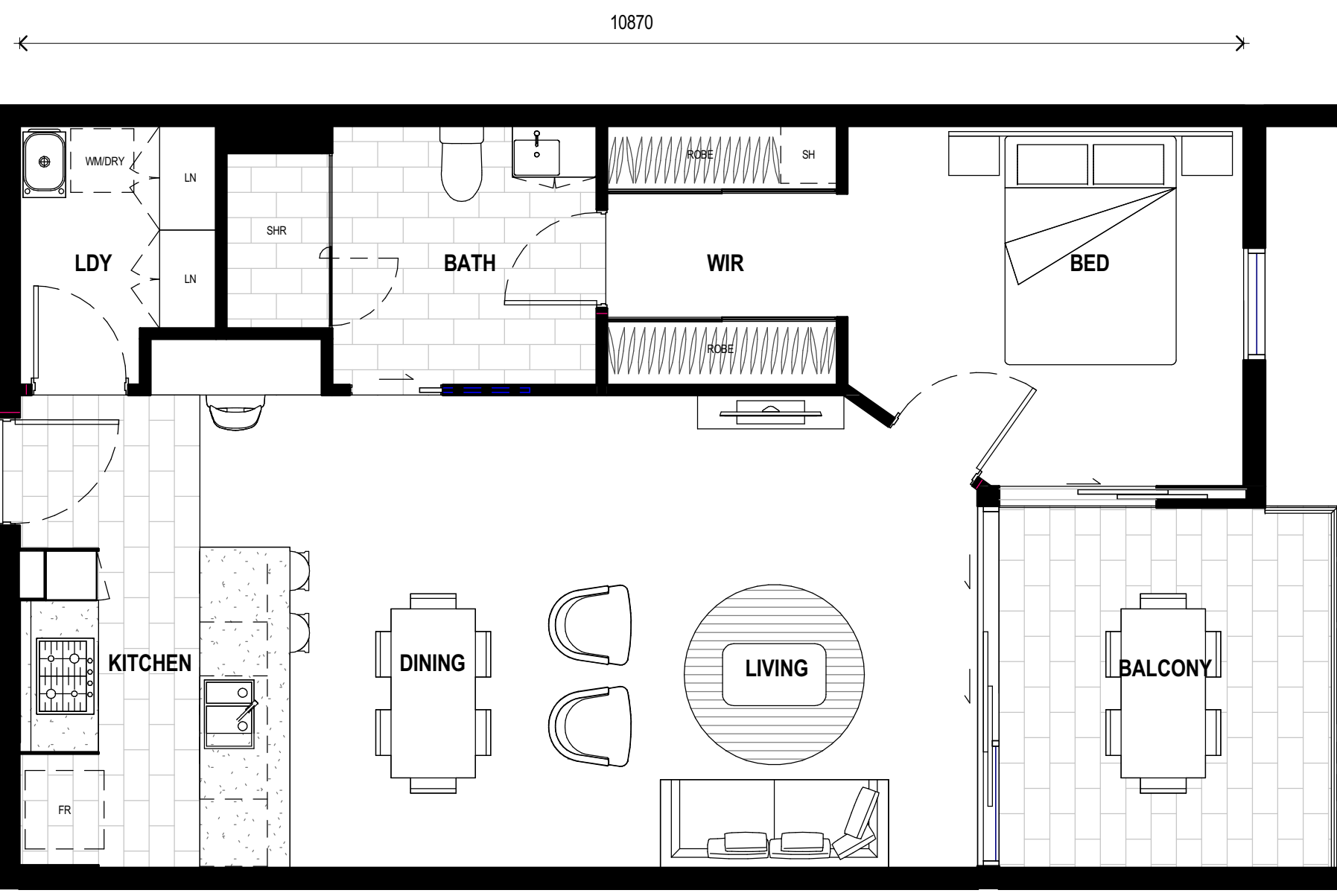


1 South
1 : 200

REVISIONS			
No.	Date	Description	By
1	17.09.14	PRELIMINARY	RS
2	10.06.15	CHANGES TO FLOOR LAYOUT - ARCHITECTS SUGGESTION	RS
3	21.12.15	DEVELOPMENT APPROVAL FOR CLIENT REVIEW	PK
4	03.01.15		PK

PROJECT TITLE	
CNR. QUEEN ST & WATERLOO ST., CLEVELAND	
LOT 1 (LOTS 1,2&3 ON RP 82814)	140-146 QUEEN ST.
LOTS 22 & 23 ON RP 119834	24-26 TAYLOR CRES.
LOT 2 ON RP 884263	72 WATERLOO ST.
DRAWING TITLE	
SOUTH & EAST ELEVATION	

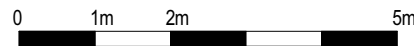
SCALE: @ A1	
PROJECT No: IH-027	
DATE: 06/12/15	DRAWN BY: PK
DWG No:	REV
TP_0301 4	



ROOM SIZES:

BED	3500 x 3200
BATH	3290 x 2300
LAUNDRY	1745 x 2300
KITCHEN	2400 x 2850
DINING	2240 x 2850
LIVING	3810 x 4200
BALCONY	3000 x 3200
WIR	2140 x 2300

*ALL MEASUREMENTS ARE SUBJECT TO UNIT TYPE



TP_MP_0500 - TYPICAL 1 BED UNIT4

APARTMENT AREA : 67.0m²
TERRACE AREA : 10.4m²
TOTAL AREA : 77.4m²

1:50

NOT FOR CONSTRUCTION

Cnr. Queen St. and Waterloo St.
CNR. QUEEN STREET AND WATERLOO STREET, CLEVELAND

PK HABITAT

These plans are intended as a guide only. The dimensions and areas are approximate only and may not accurately represent the actual dimensions and areas of the apartments or the spaces within them and are subject to change without notice. In addition, locations of utilities may vary during construction and fittings and fixtures on these plans are for illustrative purposes only. The areas are generally measured in accordance with the Property Council of Australia method of measurement. Prospective purchasers must rely on their own enquiries and should refer to the Contract of Sale and its schedules for all matters to be included in the purchase price of the apartment, including plans, finishes, fixtures, fittings, appliances and other particulars of sale. Loose furniture and planters are not included. Extent of floor finishes may vary. External space and landscaping indicative only. Refer to level plans for further information.

10870



ROOM SIZES:

BED 1	3600 X 3780
BED 2	3000 X 3600
BATH	1700 X 2730
LAUNDRY	1890 X 800
KITCHEN	2400 x 2850
DINING	2380 x 2850
LIVING	3700 x 4750
BALCONY	3000 x 3600

*ALL MEASUREMENTS ARE SUBJECT TO UNIT TYPE



TP_MP_0501 - TYPICAL 2 BED
UNIT4

APARTMENT AREA : 77.0m²
TERRACE AREA : 11.7m²
TOTAL AREA : 88.7m²

1:50

NOT FOR CONSTRUCTION

Cnr. Queen St. and Waterloo St.
CNR. QUEEN STREET AND WATERLOO STREET, CLEVELAND

PK HABITAT

These plans are intended as a guide only. The dimensions and areas are approximate only and may not accurately represent the actual dimensions and areas of the apartments or the spaces within them and are subject to change without notice. In addition, locations of utilities may vary during construction and fittings and fixtures on these plans are for illustrative purposes only. The areas are generally measured in accordance with the Property Council of Australia method of measurement. Prospective purchasers must rely on their own enquiries and should refer to the Contract of Sale and its schedules for all matters to be included in the purchase price of the apartment, including plans, finishes, fixtures, fittings, appliances and other particulars of sale. Loose furniture and planters are not included. Extent of floor finishes may vary. External space and landscaping indicative only. Refer to level plans for further information.



ROOM SIZES:

BED 1	3100 x 3300
BED 2	3600 x 3000
BED 3	3600 x 3000
ENS	2750 x 1800
LAUNDRY	1760 x 1800
KITCHEN	2400 x 3000
DINING	2600 x 3000
LIVING	3950 x 3940
BALCONY	3000 x 8500

*ALL MEASUREMENTS ARE SUBJECT TO UNIT TYPE

TP_MP_0502 - TYPICAL 3 BED
UNIT4

APARTMENT AREA : 101.9m²
TERRACE AREA : 26.7m²
TOTAL AREA : 128.6m²

1:60 NTS

NOT FOR CONSTRUCTION

Cnr. Queen St. and Waterloo St.
CNR. QUEEN STREET AND WATERLOO STREET, CLEVELAND

PK HABITAT

These plans are intended as a guide only. The dimensions and areas are approximate only and may not accurately represent the actual dimensions and areas of the apartments or the spaces within them and are subject to change without notice. In addition, locations of utilities may vary during construction and fittings and fixtures on these plans are for illustrative purposes only. The areas are generally measured in accordance with the Property Council of Australia method of measurement. Prospective purchasers must rely on their own enquiries and should refer to the Contract of Sale and its schedules for all matters to be included in the purchase price of the apartment, including plans, finishes, fixtures, fittings, appliances and other particulars of sale. Loose furniture and planters are not included. Extent of floor finishes may vary. External space and landscaping indicative only. Refer to level plans for further information.

